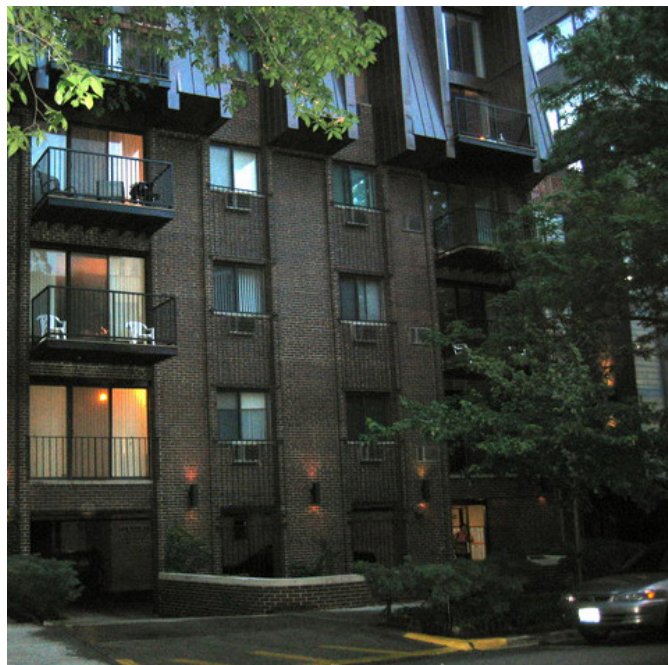


WRIGHTWOOD FLATS

512 W. WRIGHTWOOD RD.



Wrightwood Flats a lovely 20 unit apartment complex nuzzled in the cozy Lincoln Park neighborhood. A recent deconversion, Horizon's newest walk-up property has all of the unit upgrades you're looking for!



PROPERTY HIGHLIGHTS

- Mobile access control intercom system by ButterflyMX
- Heated indoor garage parking
- Spacious balconies



APARTMENT HIGHLIGHTS

- In-unit washers and dryers
- Complimentary Internet access by Everywhere Wireless
- Stunning kitchens with premium stainless steel appliances
- Quartz countertops
- Exceptional bathrooms with superior finishes and fixtures
- Beautiful, real hardwood floors
- Custom closets



UNIT TYPES

- Studios / One bath
*starting at \$1,374**
- One Bedroom / One bath
*starting at \$1,754**
- Two- Bedroom / Two Bath
*starting at \$2,550**

PRICING

*Pricing subject to change.
Visit HorizonRealtyGroup.com or call 773.529.7200 ext.130 for day-to-day pricing.

ADDITIONAL FEES (NON-REFUNDABLE)

Monthly Management Service Fee: \$35-\$75
Monthly Parking: Outdoor - \$200 Garage - \$250
Dog Fee (non-refundable): \$350
Dog Rent (monthly) Dog (30lbs weight limit): \$50
Cat Fee (non-refundable): \$150
Cat Rent (monthly) Cat: \$25

LINCOLN PARK

WRIGHTWOOD FLATS

512 W. WRIGHTWOOD RD.

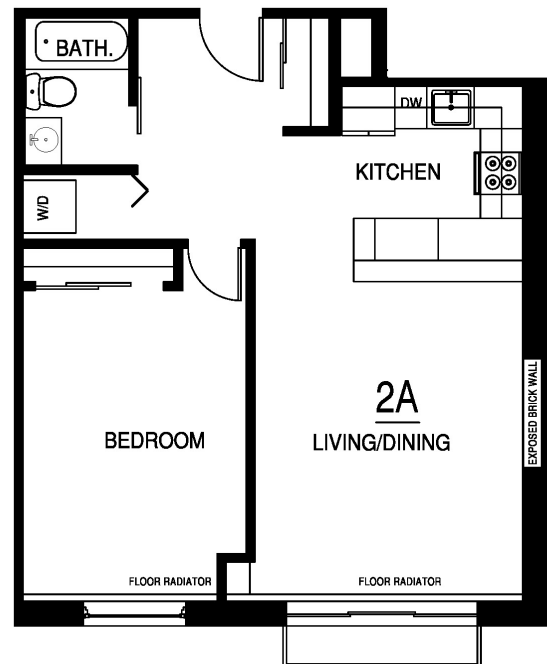


TYPICAL FLOOR PLANS

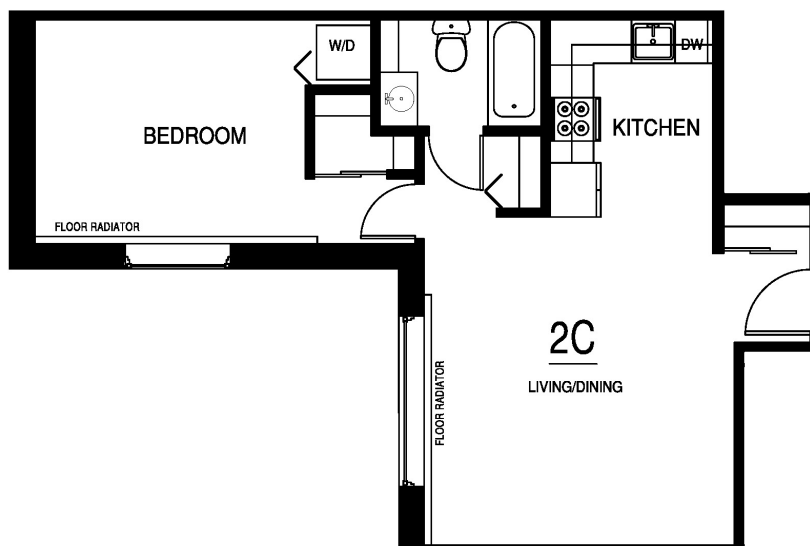
STUDIO - 2E - 378 SF



ONE-BEDROOM - 2A - 623 SF



ONE-BEDROOM - 2C - 544 SF



CONTACT: LOGAN WEISS • logan@horizonrealtygroup.com • 773.529.7200 Ext. 130